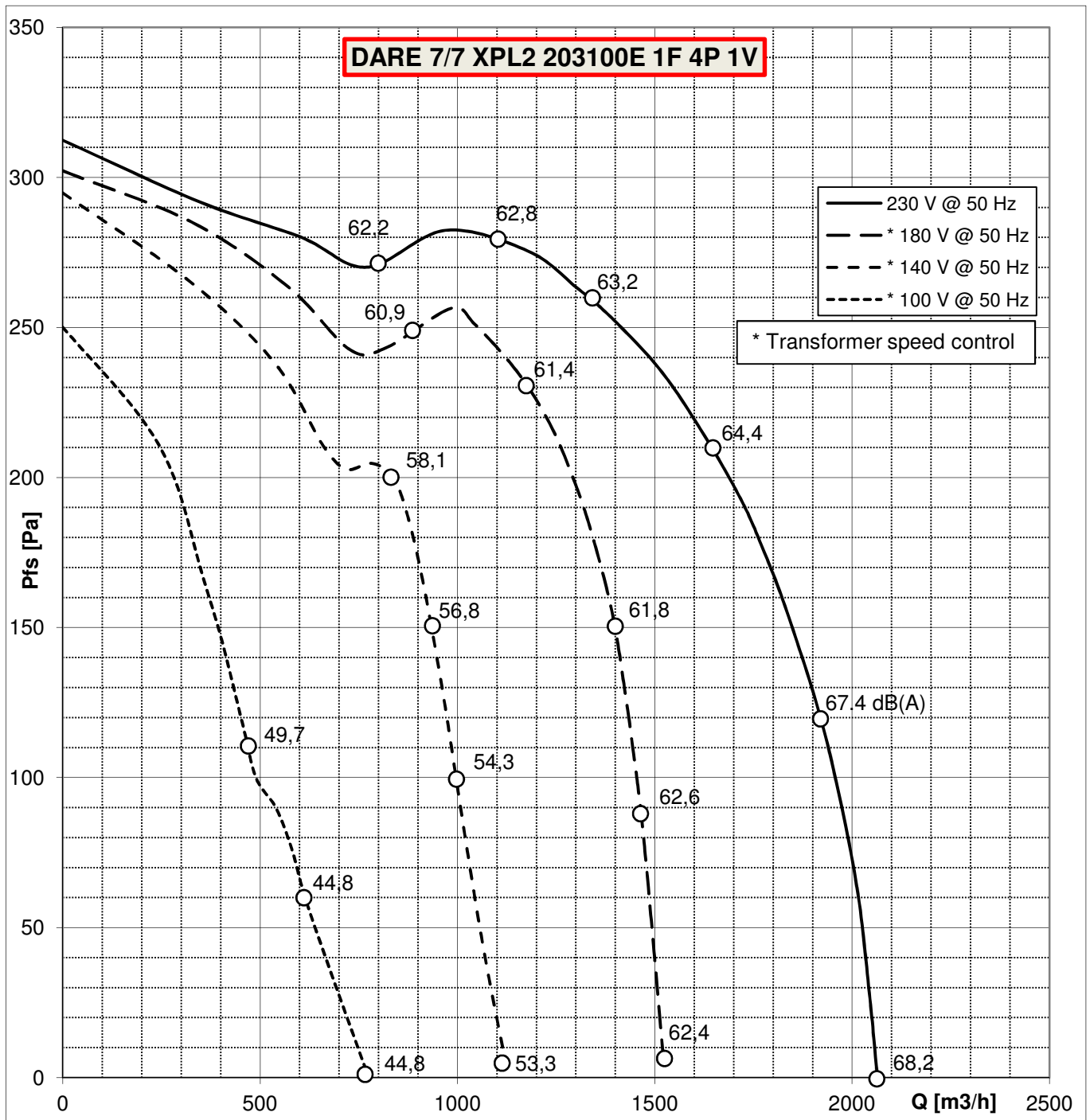


Air density (γ): 1.20 kg/m³
 Installation type "B": free inlet, ducted outlet
 12000 m³/h fan test chamber according to AMCA 210/05 fig. 12
 Free field inlet side Lp(A) measurements at 1 m according to ISO 3746:2011

Fan type:	DARE 7/7 XPL2	Motor code:	203100E	Motor T.H.:	YES IN
Test nr.:	2212 - 2215	Motor power [W]:	184	Capacitor [μF]:	8
Date:	2017/01/18	Motor poles:	4	Fan max. abs. current [A]:	2
Power supply[V]:	230 1~	Mot. prot. class:	IP44		
Frequency [Hz]:	50	Mot. ins. class:	F		

Fan ErP status: ErP 2015



Data are not certified by AMCA